



THE GABLES
ATTLEBOROUGH



THE GABLES
ATTLEBOROUGH

WELCOME TO **THE GABLES**

SITUATED IN THE PEACEFUL MARKET TOWN OF ATTLEBOROUGH, THE GABLES IS A NEW COLLECTION OF 2, 3 AND 4 BEDROOM HOMES.

Characterful details and materials reflect the architecture of the local area, while attractive green spaces, trees and hedgerows create a natural setting.

Living here offers everything you want to enjoy life: modern, comfortable and sustainable homes, a friendly community, and an appealing range of shops and amenities close at hand. Combined with good road and rail links, and beautiful countryside to explore, there are plenty of excellent reasons to make The Gables your new home.



DISCOVER THE LOCAL AREA

WIDE OPEN SPACES, A VAST FOREST, CHARMING VILLAGES AND HISTORIC TOWNS
- THIS LOCATION HAS SO MUCH TO OFFER.

Surrounding Norfolk countryside

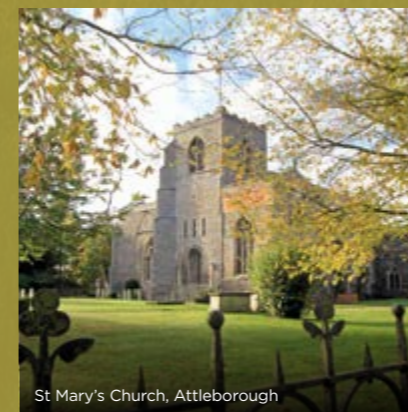
The Gables is just a 15-minute walk* to the centre of Attleborough, a bustling market town with a history tracing back to Saxon times. This charming town has everything you need for day-to-day life, from shops and parks to a rail station, two primary schools and a secondary school. There's also a nearby prep school, plus local nurseries and a forest school where children can learn about nature through outdoor adventures.

Just north of The Gables is Hall Farm, a traditional farm shop selling cheeses, meat, eggs, fruit and veg, dairy, baked goods and preserves, with a café serving breakfast, lunch and tea. Wymondham is an attractive town six miles to the north-east, with a grand abbey and heritage museum plus inviting medieval streets.

Thetford Forest, a 18,000 hectare patchwork of woods and tranquil heathland is just 15 miles away, with hiking and mountain biking trails, play areas and picnic spots.

Enjoy a day out at Snetterton Speedway, one of the UK's top motor racing circuits, for races or driving experiences. Another nearby attraction is Old Buckenham Aerodrome, with a fascinating museum of aviation memorabilia. Or head to the award-winning Banham Zoological Gardens, set in 50 acres of peaceful countryside, for extraordinary wildlife encounters: tigers, monkeys, meerkats and more.

For a trip to the sea, head for the stunning beaches and dramatic cliffs of the Norfolk and Suffolk coastline, from just over an hour's drive away.



St Mary's Church, Attleborough



Wymondham



Snetterton Speedway

FROM BOUTIQUES TO EVENING DRINKS



Church Street, Attleborough



Sculpt Interiors, Attleborough



Dunstan Hall

Attleborough high street is lined with appealing shops, cafés, restaurants and pubs. There are two large supermarkets, Sainsbury's and Lidl, plus several smaller convenience stores. For those keen on keeping fit, the leisure centre offers a gym, football, basketball, badminton and summer tennis courts. There are health and fitness clubs, plus outdoor gym equipment and junior football pitches in Gaymers Park. There's even an athletics academy with family-friendly sessions in track and field or cross country running.

Wymondham also has its own selection of attractive independent shops, restaurants and tea rooms, as well as Waitrose and Morrisons supermarkets. For more extensive shopping, dining and cultural

amenities, Norwich is the place to go — a 31-minute drive* or train ride away. Its winding, pedestrianised streets are full of fashion brands, smart restaurants, family-friendly chains and lively pubs and bars. There are also three cinemas, four theatres and several live music venues. The city is host to a rich programme of classical concerts, ballet and opera at its various performance venues, while the cathedral and castle are magnificent historic sites.

There are several golf courses in the surrounding countryside, including at Dunstan Hall. This luxury hotel also has a spa, perfect for when you want to relax and recharge.



*Travel time is approximate. Source: Google Maps



Norwich city centre

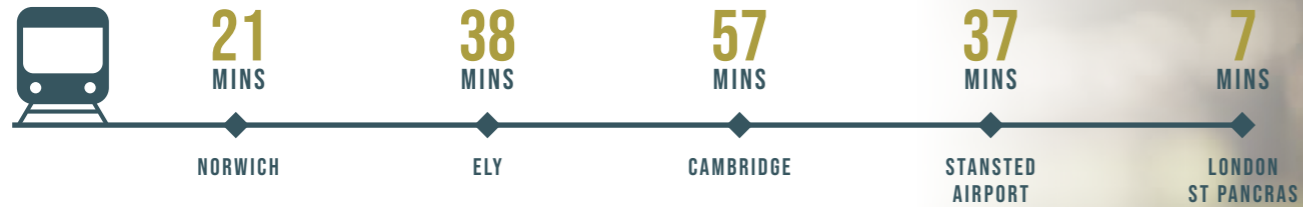


Attleborough town sign

TRAVEL WITH EASE

The Gables is conveniently located for both road and rail links. You can quickly reach the A11 for car travel, while Attleborough rail station is just a five-minute drive or 18-minute walk away. From here, you can access train services to Norwich, Cambridge, Ely and London. There is also a bus stop on the Number 13 route to Norwich right next to The Gables. For international travel, Stansted Airport is just over one-and-a-half hours away by train or by car.

BY TRAIN FROM
ATTLEBOROUGH
STATION



BY CAR FROM THE
GABLES



BY BUS FROM THE
GABLES



BY BICYCLE FROM THE
GABLES



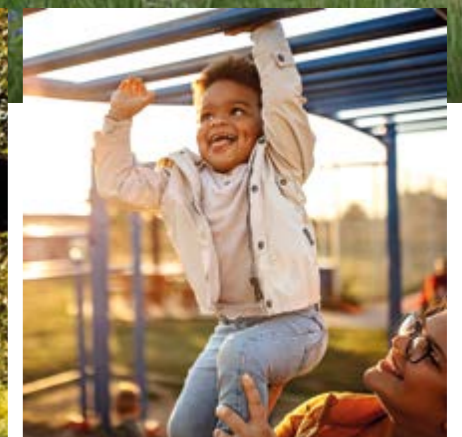


Computer generated image is indicative only.

A NEW PLACE TO CALL HOME

The Gables has been thoughtfully designed to create a welcoming and sociable environment where neighbours can gather and children can play. With handsome exteriors, featuring attractive architectural details, these are homes to be proud of, delighting you every time you return to them. Inside, the energy efficiency, modern comfort and stylish finish make them a joy to live in.

The outside surroundings have been equally well considered, with trees and hedgerows creating leafy streets and outlooks. This uplifting natural setting will be enhanced by open green spaces and an attenuation pond to encourage wildlife. Once completed, The Gables is designed to feature allotments, a larger landscaped green, a playground and a multi-use games area. So you will be able to enjoy plenty of outdoor space right on your doorstep, with footpaths and a cycle way offering active and enjoyable ways to move around.



MODERN DESIGNS BEAUTIFUL FINISHES

The houses draw inspiration from the local architecture, with interiors designed for modern living. The considered specification throughout matches the quality and high standards of the build, with many features that will help you live comfortably, sustainably and with lower energy bills.

Layouts offer a mix of open-plan living spaces to share and separate rooms that offer privacy when you want it. This flexibility allows you to switch effortlessly from work to relaxation to social occasions.

With the neutral palette, you can either add your own personal touches of colour, or allow the simple sophistication of the design to be a calm backdrop to your life. The Gables offers everything you're looking for in a modern home.



SUSTAINABILITY BUILT IN

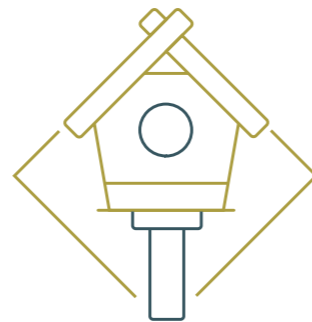
THE GABLES HAS BEEN DESIGNED TO HELP YOU LIVE MORE SUSTAINABLY, NOT ONLY TO PROTECT THE ENVIRONMENT BUT ALSO TO HELP YOU REDUCE YOUR ENERGY USAGE AND ENJOY LOWER FUEL BILLS.

All homes are completely gas free; instead, they are heated by efficient air-source heat pumps, which transfer heat from the outside air to water, heating your rooms via radiators or underfloor heating. They can also heat water stored in a hot water cylinder for your hot taps, showers and baths. In addition, high levels of insulation including full cavity wall insulation, energy efficient appliances and double glazing keep the homes warm and comfortable as well as making them cheaper to run**.

Outside, provision has been made for electric vehicle charging points on each home, giving you the opportunity to use a cleaner form of transport, while light pollution around the development is also reduced.

BAT AND BIRD BOXES*

to encourage and retain wildlife

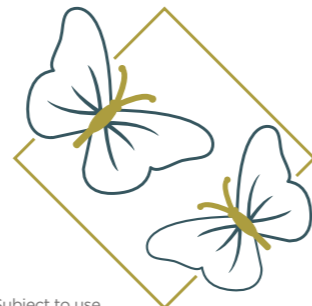


5 ATTENUATION PONDS*

designed to support aquatic vegetation

RICH MIX OF PLANTING*

to enhance local ecology and attract bees and butterflies



*Applies to the entire scheme at The Gables and is subject to change. **Subject to use.

SAVE EVEN MORE WITH A NEW HOME

WITH THEIR HIGHER LEVELS OF INSULATION AND ENERGY EFFICIENT FEATURES, A NEW HOME AT THE GABLES COULD SAVE YOU A SIGNIFICANT AMOUNT ON YOUR FUEL BILLS WHEN COMPARED TO OLDER PROPERTIES, MAKING THEM A SMART MOVE.



Save up to

44% IN CARBON EMISSIONS*

with air source heat pumps

*nextenergyuk.co.uk/air-source-heat-pump

SPECIFICATION

KITCHEN

- Matt finish shaker-style kitchen units with soft close to doors and drawers
- Slimline laminate worktop with matching upstand and splashback behind hob
- Ceramic hob
- Integrated single oven
- Integrated microwave
- Integrated fridge/freezer
- Integrated dishwasher
- Integrated cooker hood
- Stainless steel sink with contemporary brushed steel mixer tap
- LED feature lighting to wall units
- Integrated washer/dryer

Kitchen designs and layouts vary; please speak to our Sales Executives for further information

EN-SUITE

- Low profile shower tray with glass shower door
- Framed feature mirror to match vanity top (where layout allows)
- Large format wall tiles
- Heated chrome towel rail

BATHROOM

- Bath with shower over and glass screen
- Framed feature mirror (where layout allows)
- Bath panel to match vanity top
- Large format wall tiles
- Heated chrome towel rail

DECORATIVE FINISHES

- White painted single panel moulded internal doors with contemporary dual finish ironmongery
- Square cut skirting and architrave
- Walls painted in white emulsion
- Smooth ceilings in white emulsion

DOORS AND WINDOWS

- Composite front door with multi-point locking system
- High efficiency double glazed uPVC windows, with matching patio doors
- Up and over garage door, colour to match front door where applicable

HEATING AND WATER

- Underfloor heating to ground floor, radiators to upper floor
- Heated chrome towel rails to bathroom and en-suite
- Air source heat pump
- Hot water storage tank

ELECTRICAL

- Downlights to entrance hall, kitchen, open plan kitchen/living/dining area, bathroom, en-suite and WC
- Pendant fittings to separate living room, living/dining room, landing and all bedrooms
- LED feature lighting to wall units in kitchen
- Shaver sockets to bathroom and en-suite
- TV, BT and data points to selected locations
- BT & Hyperoptic fibre connection to all properties for customer's choice of broadband provider
- Pre-wired for customer's own SkyQ connection
- External lighting to front of property
- Light and power to garage where applicable
- Hard-wired smoke and heat detectors
- Spur for customer's own installation of security alarm panel
- Provision for future electric car charger

EXTERNAL FINISHES

- Landscaping to front garden
- Turf to rear garden
- Paved patio
- External tap

CONSTRUCTION

- Traditionally constructed brick and block outer walls, cavity filled with insulation
- Concrete floor to ground floors with timber to upper floors
- Exterior treatments are a combination of red, buff and brown facing bricks, with wood effect cladding to selected properties, and grey, red or black roof tiles
- uPVC rain-water goods

WARRANTY

- 10 year NHBC warranty

The following items are not included in the purchase price and are available to purchase as optional extras dependent on build status at the time of reservation.

- Amtico flooring to ground floor, bathroom and en-suite*
- Carpet to stairs and upper floor/s
- Built in wardrobe to principal bedroom
- Electric vehicle charger
- External light to rear of property*

(* floor tiles to bathroom and en-suite and external light are included to plots 58-61)

Costs for these items are available on request from Sales Executives.

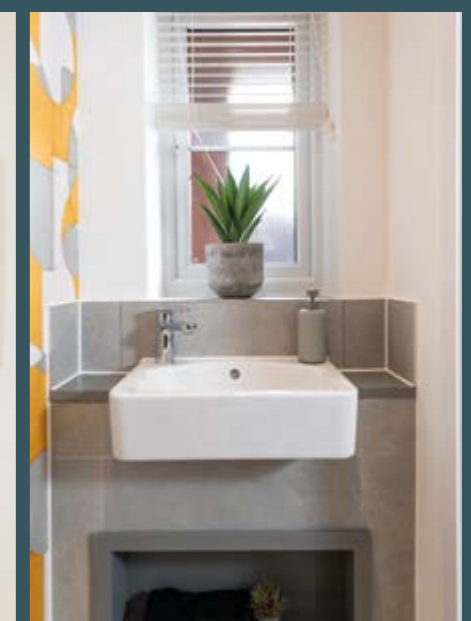
Plots 54-57, 102, 103 and 121-128 specification varies to include:

- All fitted flooring, including bathrooms and en-suite
- Built-in mirrored wardrobe with sliding doors to principal bedroom

Speak to a sales executive for specific specification details on each plot.

A Management Company has been formed at The Gables and will be responsible for the management and maintenance of the shared services and external communal areas of the development, including the green open spaces, play areas, un-adopted estate roads and footpaths. All homeowners will automatically be made members of the Management Company when they purchase a home at The Gables. A managing agent has been appointed on behalf of the Management Company and will take on the day to day management and maintenance responsibilities. All homeowners will be required to pay a contribution towards the maintenance of the development, which will be collected by the managing agent in the form of an annual estate charge.

We are unable to accommodate any individual changes, additions or amendments to the specification, layout or plans to any individual home. Please note that it may not be possible to obtain the products as referred to in the specification; in such cases a similar alternative will be provided. Hill reserve the right to make these changes as required.



Showhome photography is indicative only.



SITE PLAN



THE HOUSES

THE THUME
Two bedroom house
Plots 144 & 145

THE WAVENEY
Two bedroom house
Plots 129, 130, 138, 139 & 140

THE WEYBOURNE
Two bedroom house
Plots 103, 107, 108, 109, 110,
125, 148, 149, 150 & 151

THE PANFORD
Three bedroom house
Plots 54, 55, 62, 63, 66, 69, 84, 114,
119, 120, 127, 128, 134, 152 & 153

THE BURE
Three bedroom house
Plots 56, 57, 67, 68, 80, 81, 85,
104, 105, 106, 131 & 132

THE GLAVEN
Three bedroom house
Plots 60, 61, 92 & 93

THE NAR
Three bedroom house
Plots 58, 59, 87, 90, 91, 102 & 126

**SHARED OWNERSHIP
BY LATIMER**

THE BABINGLEY
Three bedroom house
Plots 86 & 124

THE THET
Three bedroom house
Plot 111

AFFORDABLE RENTED

LEAP
Local equipped area of play

THE NENE
Three bedroom house
Plots 64 & 82

THE SPRING
Three bedroom house
Plots 116, 117, 118, 141, 142 & 143

Acoustic fence

Parking space

Garage

V - Visitor bay

• - Carport

THE WENSUM
Three bedroom house
Plots 89, 123, 136, 137, 146 & 147

THE INGOL
Three bedroom house
Plots 65 & 83

THE YARE
Four bedroom house
Plots 88, 112, 113, 115, 122 & 133

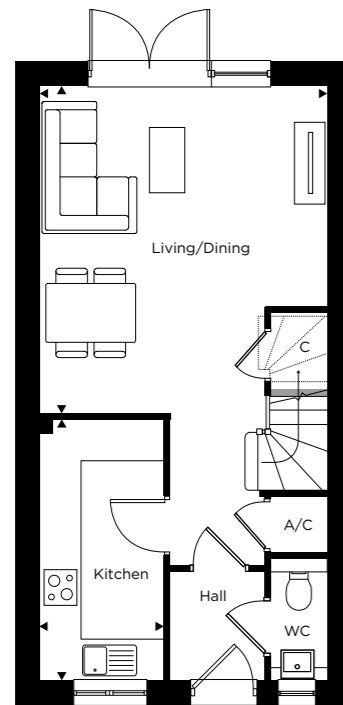
THE TIFFEY
Four bedroom house
Plots 121 & 135

The information contained within this document does not constitute part of any offer, contract or warranty. Whilst the plans have been prepared with all due care for the convenience of the intending purchaser, the information contained herein is a preliminary guide only. Areas such as roads, drives, paths and patios plus trees and landscaping are indicative only and may vary.

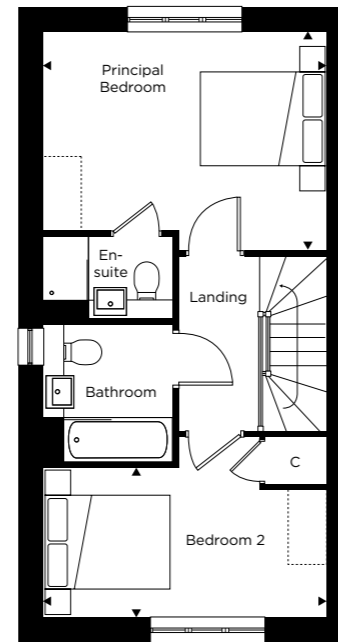
THE THUME

TWO BEDROOM HOUSE

SEMI-DETACHED: PLOTS 144 & 145*



GROUND FLOOR



FIRST FLOOR

Ground Floor

Living/Dining
4.40m x 5.00m 14'5" x 16'4"

Kitchen
1.90m x 4.00m 6'2" x 13'1"

First Floor

Principal Bedroom
4.40m x 3.10m 14'5" x 10'2"

Bedroom 2
4.40m x 2.30m 14'5" x 7'6"

*Handed to floorplan shown

C = Cupboard A/C = Airing Cupboard  = Indicative wardrobe position

All floorplans are not to scale. Layouts provide approximate measurements only and are subject to planning. Dimensions, which are taken from the indicated points of measurement, are for guidance only and are not intended to be used for window treatments or items of furniture. Bathroom and kitchen layouts are indicative only and are subject to change. The information contained within this document does not constitute part of any offer, contract or warranty. Whilst the plans have been prepared with all due care for the convenience of the intending purchaser, the information contained herein is a preliminary guide only.



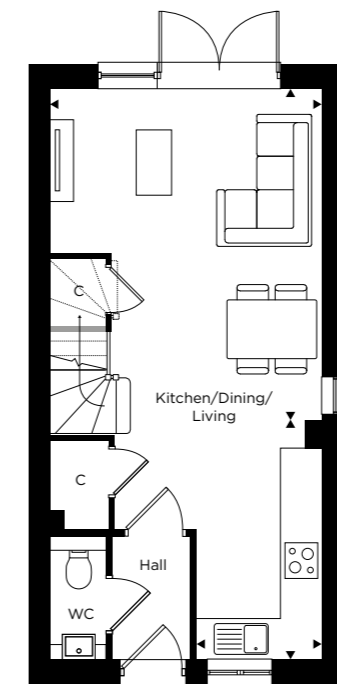
Computer generated image of plots 144 & 145 The Thume is indicative only.

THE WAVENEY

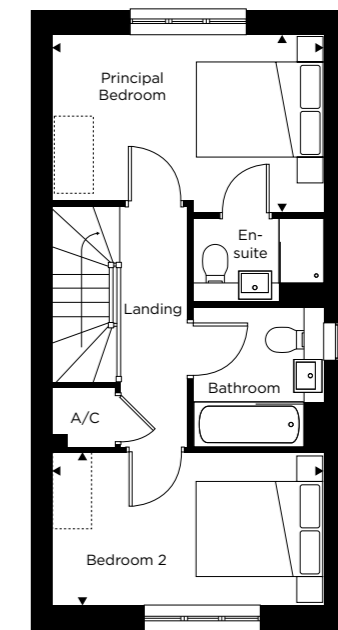
TWO BEDROOM HOUSE

SEMI-DETACHED: PLOTS 129* & 130

TERRACED: PLOTS 138, 139, 140



GROUND FLOOR



FIRST FLOOR

Ground Floor

Living/Dining
4.15m x 5.30m 13'7" x 17'4"

Kitchen
1.90m x 3.80m 6'2" x 12'5"

First Floor

Principal Bedroom
4.15m x 2.75m 13'7" x 9'0"

Bedroom 2
4.15m x 2.35m 13'7" x 7'8"

*Handed to floorplan shown. **No window to plot 138 & 139

C = Cupboard A/C = Airing Cupboard = Indicative wardrobe position

Exterior finishes may vary, speak to the sales team for more information. Computer generated image of plots 129 & 130 The Waveney is indicative only.

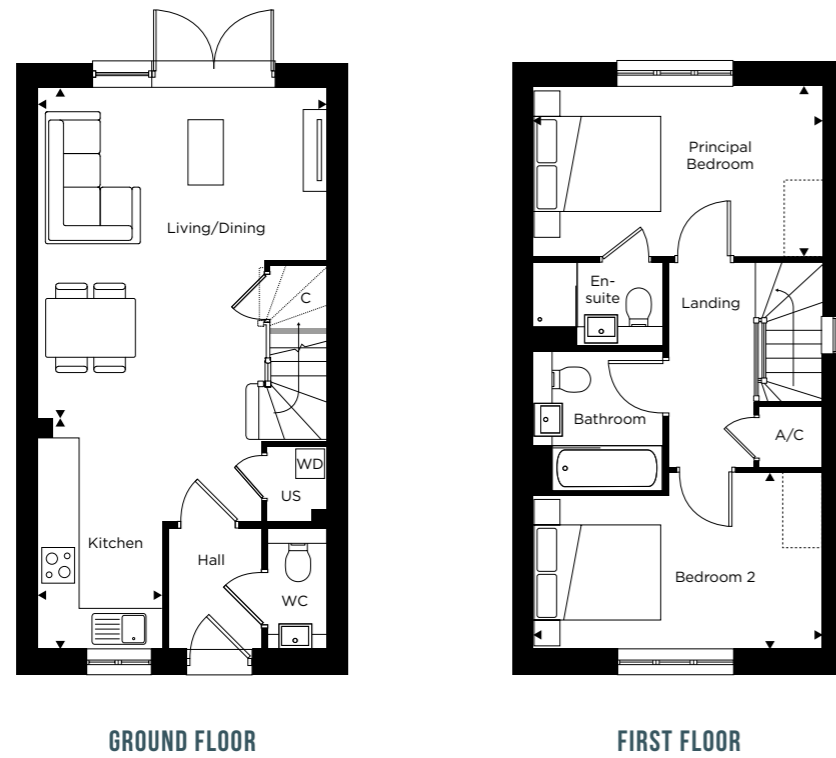
All floorplans are not to scale. Layouts provide approximate measurements only and are subject to planning. Dimensions, which are taken from the indicated points of measurement, are for guidance only and are not intended to be used for window treatments or items of furniture. Bathroom and kitchen layouts are indicative only and are subject to change. The information contained within this document does not constitute part of any offer, contract or warranty. Whilst the plans have been prepared with all due care for the convenience of the intending purchaser, the information contained herein is a preliminary guide only.

THE WEYBOURNE

TWO BEDROOM HOUSE

SEMI-DETACHED: PLOTS 103*, 107, 110, 125, 148*, 149, 150* & 151

TERRACED: PLOTS 108 & 109



Ground Floor

Living/Dining
4.35m x 5.05m 14'3" x 16'6"

Kitchen
1.90m x 3.55m 6'2" x 11'7"

First Floor

Principal Bedroom
4.35m x 2.60m 14'3" x 8'6"

Bedroom 2
4.35m x 2.70m 14'3" x 8'10"

*Handed to floorplan shown

C = Cupboard A/C = Airing Cupboard US = Utility Store WD = Washer/Dryer □ = Indicative wardrobe position

All floorplans are not to scale. Layouts provide approximate measurements only and are subject to planning. Dimensions, which are taken from the indicated points of measurement, are for guidance only and are not intended to be used for window treatments or items of furniture. Bathroom and kitchen layouts are indicative only and are subject to change. The information contained within this document does not constitute part of any offer, contract or warranty. Whilst the plans have been prepared with all due care for the convenience of the intending purchaser, the information contained herein is a preliminary guide only.



Exterior finishes may vary, speak to the sales team for more information. Computer generated image of plots 150 & 151 The Weybourne is indicative only.



Exterior finishes may vary, speak to the sales team for more information. Computer generated image of plot 69 The Panford is indicative only.

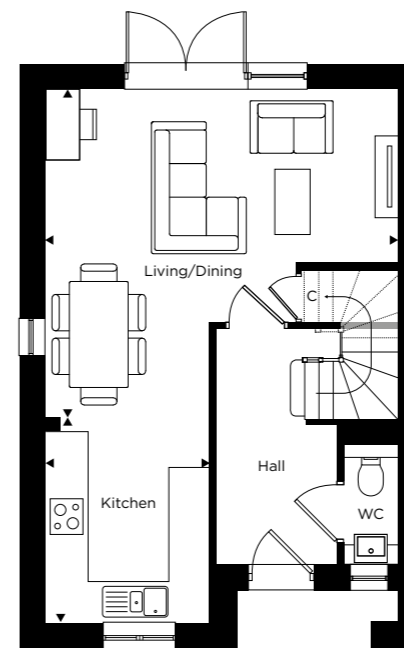
THE PANFORD

THREE BEDROOM HOUSE

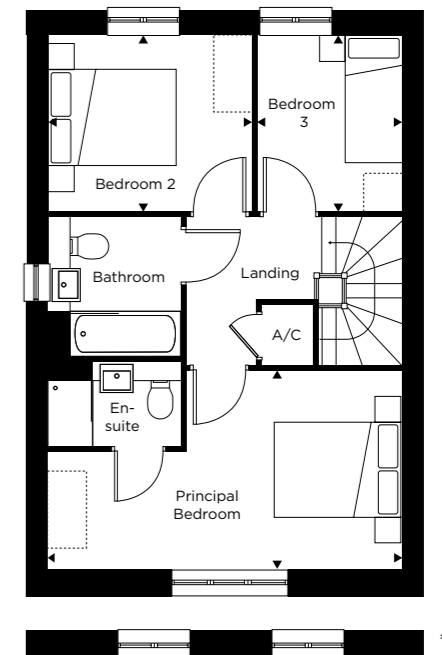
DETACHED: PLOTS 66, 69 & 84*

LINK-DETACHED: PLOTS 114 & 134*

SEMI-DETACHED: PLOTS 54*, 55, 62*, 63, 119, 120*, 127*, 128, 152 & 153*



GROUND FLOOR



FIRST FLOOR

Ground Floor

Living/Dining
5.40m x 5.05m 17'8" x 16'6"

Kitchen
2.50m x 3.15m 8'2" x 10'4"

First Floor

Principal Bedroom
5.40m x 3.05m 17'8" x 10'0"

Bedroom 2
3.10m x 2.70m 10'2" x 8'10"

Bedroom 3
2.15m x 2.70m 7'0" x 8'10"

*Handed to floorplan shown. **Alternative 2 window layout to Plots 54, 55, 62, 63, 120, 127 & 153

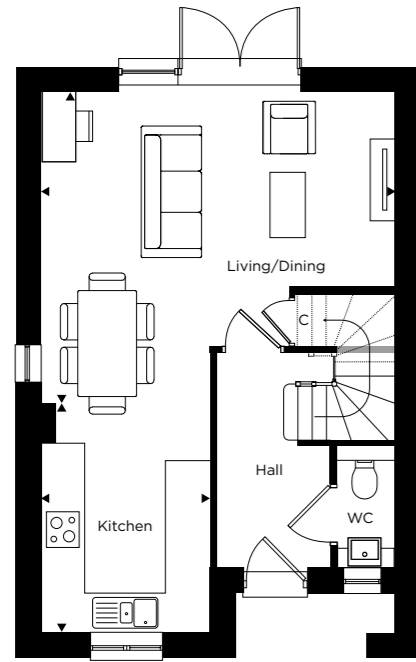
C = Cupboard A/C = Airing Cupboard = Indicative wardrobe position

All floorplans are not to scale. Layouts provide approximate measurements only and are subject to planning. Dimensions, which are taken from the indicated points of measurement, are for guidance only and are not intended to be used for window treatments or items of furniture. Bathroom and kitchen layouts are indicative only and are subject to change. The information contained within this document does not constitute part of any offer, contract or warranty. Whilst the plans have been prepared with all due care for the convenience of the intending purchaser, the information contained herein is a preliminary guide only.

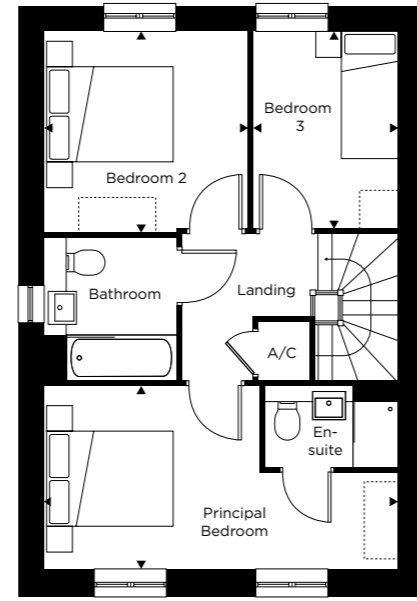
THE BURE

THREE BEDROOM HOUSE

DETACHED: PLOTS 67, 68 & 85*
 SEMI-DETACHED: PLOTS 56*, 57, 80, 81*, 104, 106, 131 & 132*
 TERRACED: PLOT 105



GROUND FLOOR



FIRST FLOOR

Ground Floor

Living/Dining
 5.40m x 4.80m 17'8" x 15'8"

Kitchen
 2.60m x 3.40m 8'6" x 11'1"

First Floor

Principal Bedroom
 5.35m x 2.80m 17'6" x 9'2"

Bedroom 2
 3.05m x 3.10m 10'0" x 10'2"

Bedroom 3
 2.15m x 3.00m 7'0" x 9'10"

*Handed to floorplan shown

**Alternative single window layout to Plots 67, 68 & 85

C = Cupboard A/C = Airing Cupboard □ = Indicative wardrobe position

All floorplans are not to scale. Layouts provide approximate measurements only and are subject to planning. Dimensions, which are taken from the indicated points of measurement, are for guidance only and are not intended to be used for window treatments or items of furniture. Bathroom and kitchen layouts are indicative only and are subject to change. The information contained within this document does not constitute part of any offer, contract or warranty. Whilst the plans have been prepared with all due care for the convenience of the intending purchaser, the information contained herein is a preliminary guide only.



Exterior finishes may vary, speak to the sales team for more information. Computer generated image of plots 80 & 81 The Bure is indicative only.

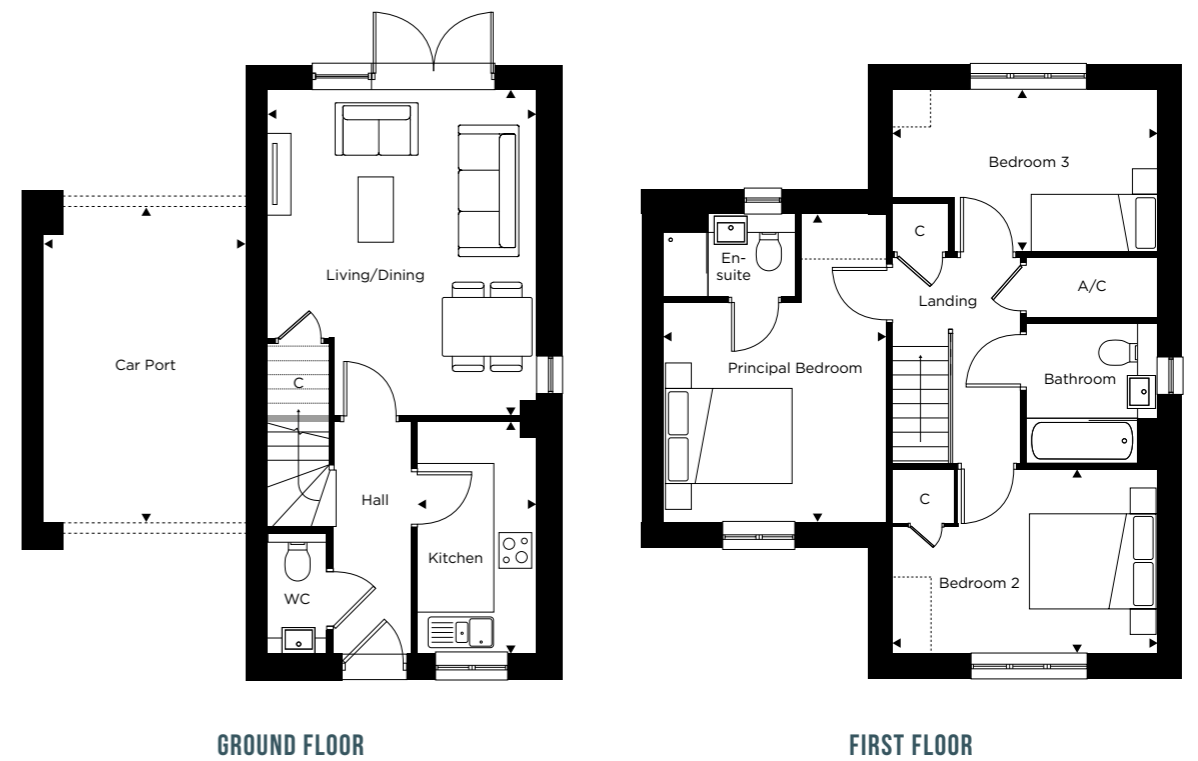


Exterior finishes may vary, speak to the sales team for more information. Computer generated image of plot 60 The Glaven is indicative only.

THE GLAVEN

THREE BEDROOM HOUSE

LINK-DETACHED: PLOTS 60, 61*, 92* & 93



Ground Floor

Living/Dining
4.05m x 4.95m 13'3" x 16'2"

Kitchen
1.80m x 3.50m 5'10" x 11'5"

Car Port
3.15m x 4.80m 10'4" x 15'8"

First Floor

Principal Bedroom
3.40m x 4.70m 11'1" x 15'5"

Bedroom 2
4.05m x 2.80m 13'3" x 9'2"

Bedroom 3
4.05m x 2.45m 13'3" x 8'0"

*Handed to floorplan shown

C = Cupboard A/C = Airing Cupboard = Indicative wardrobe position

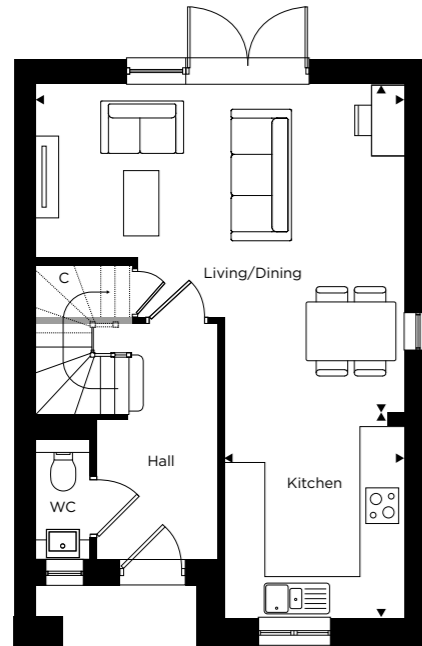
All floorplans are not to scale. Layouts provide approximate measurements only and are subject to planning. Dimensions, which are taken from the indicated points of measurement, are for guidance only and are not intended to be used for window treatments or items of furniture. Bathroom and kitchen layouts are indicative only and are subject to change. The information contained within this document does not constitute part of any offer, contract or warranty. Whilst the plans have been prepared with all due care for the convenience of the intending purchaser, the information contained herein is a preliminary guide only.

THE NAR

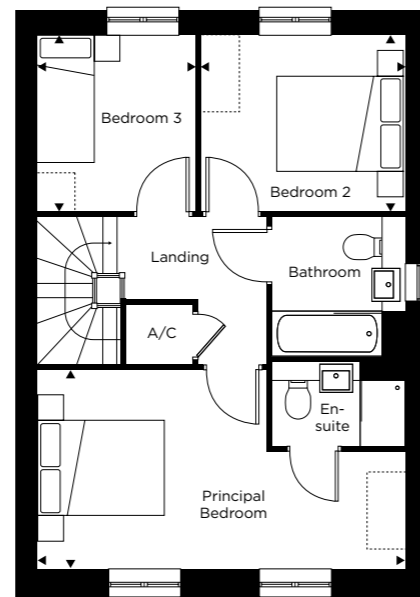
THREE BEDROOM HOUSE

DETACHED: PLOT 87

SEMI-DETACHED: PLOTS 58, 59*, 90*, 91, 102 & 126*



GROUND FLOOR



FIRST FLOOR

Ground Floor

Living/Dining
5.60m x 5.20m 18'4" x 17'0"

Kitchen
2.70m x 3.00m 8'10" x 9'10"

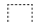
First Floor

Principal Bedroom
5.65m x 3.05m 18'6" x 10'0"

Bedroom 2
3.10m x 2.70m 10'2" x 8'10"

Bedroom 3
2.40m x 2.70m 7'10" x 8'10"

*Handed to floorplan shown

C = Cupboard A/C = Airing Cupboard  = Indicative wardrobe position

All floorplans are not to scale. Layouts provide approximate measurements only and are subject to planning. Dimensions, which are taken from the indicated points of measurement, are for guidance only and are not intended to be used for window treatments or items of furniture. Bathroom and kitchen layouts are indicative only and are subject to change. The information contained within this document does not constitute part of any offer, contract or warranty. Whilst the plans have been prepared with all due care for the convenience of the intending purchaser, the information contained herein is a preliminary guide only.



Exterior finishes may vary, speak to the sales team for more information. Computer generated image of plots 58 & 59 The Nar is indicative only.

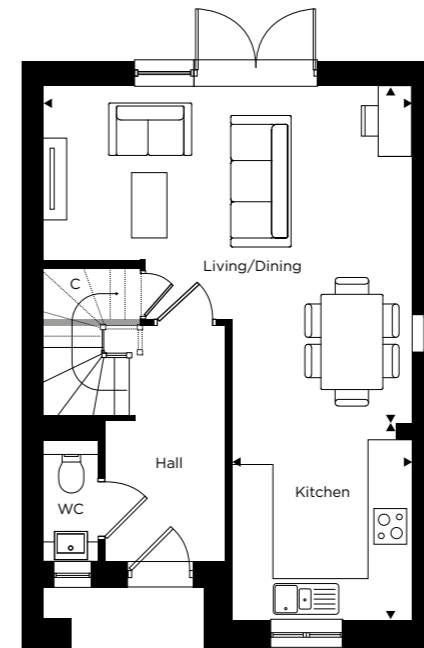


Exterior finishes may vary, speak to the sales team for more information. Computer generated image of plot 86 The Babingley is indicative only.

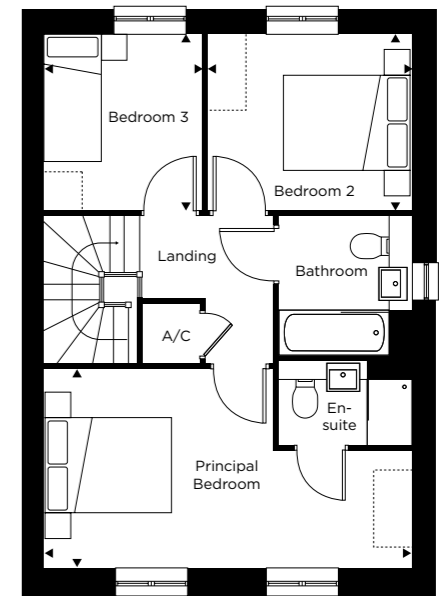
THE BABINGLEY

THREE BEDROOM HOUSE

DETACHED: PLOTS 86 & 124



GROUND FLOOR



FIRST FLOOR

Ground Floor

Living/Dining
5.60m x 5.20m 18'4" x 17'0"

Kitchen
2.70m x 3.00m 8'10" x 9'10"

First Floor

Principal Bedroom
5.65m x 3.05m 18'6" x 10'0"

Bedroom 2
3.10m x 2.70m 10'2" x 8'10"

Bedroom 3
2.40m x 2.70m 7'10" x 8'10"

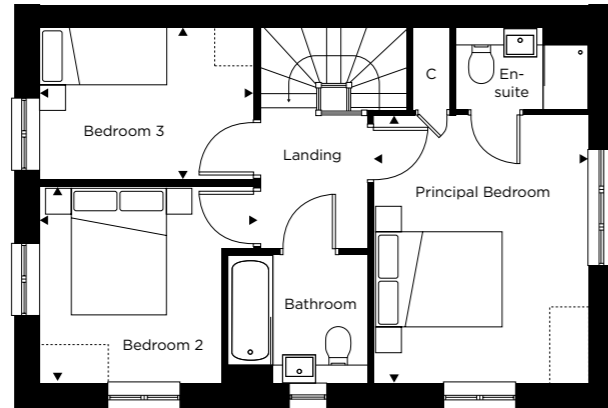
C = Cupboard A/C = Airing Cupboard = Indicative wardrobe position

All floorplans are not to scale. Layouts provide approximate measurements only and are subject to planning. Dimensions, which are taken from the indicated points of measurement, are for guidance only and are not intended to be used for window treatments or items of furniture. Bathroom and kitchen layouts are indicative only and are subject to change. The information contained within this document does not constitute part of any offer, contract or warranty. Whilst the plans have been prepared with all due care for the convenience of the intending purchaser, the information contained herein is a preliminary guide only.

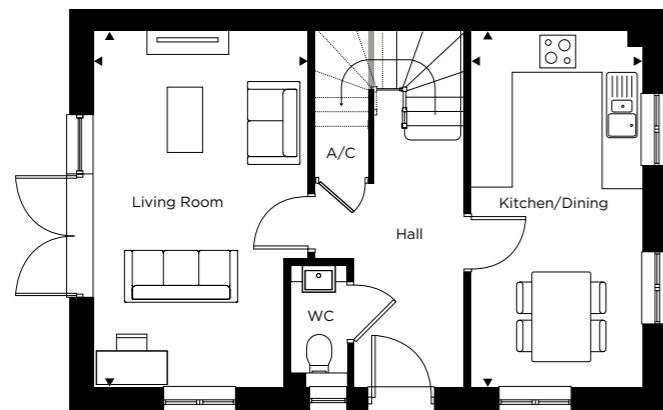
THE THET

THREE BEDROOM HOUSE

DETACHED: PLOT 111



FIRST FLOOR



GROUND FLOOR

Ground Floor

Kitchen/Dining
3.25m x 5.50m 10'7" x 18'0"

Living Room
2.60m x 5.50m 8'6" x 18'0"

First Floor

Principal Bedroom
3.25m x 4.05m 10'7" x 13'3"

Bedroom 2
3.30m x 3.05m 10'9" x 10'0"

Bedroom 3
3.30m x 2.30m 10'9" x 7'6"

C = Cupboard A/C = Airing Cupboard = Indicative wardrobe position

All floorplans are not to scale. Layouts provide approximate measurements only and are subject to planning. Dimensions, which are taken from the indicated points of measurement, are for guidance only and are not intended to be used for window treatments or items of furniture. Bathroom and kitchen layouts are indicative only and are subject to change. The information contained within this document does not constitute part of any offer, contract or warranty. Whilst the plans have been prepared with all due care for the convenience of the intending purchaser, the information contained herein is a preliminary guide only.



Computer generated image of plot 111 The Thet is indicative only.

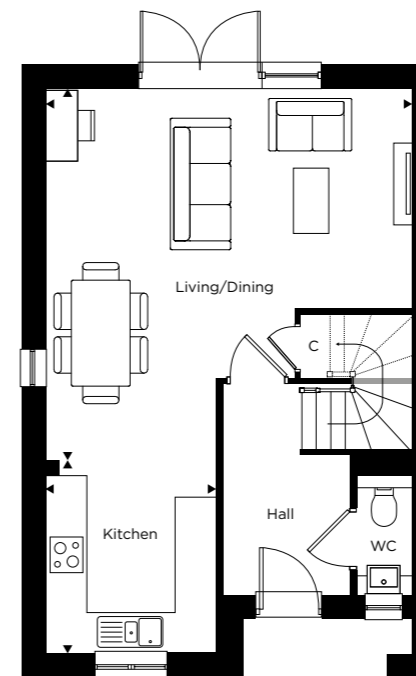


Exterior finishes may vary, speak to the sales team for more information. Computer generated image of plot 82 The Nene is indicative only.

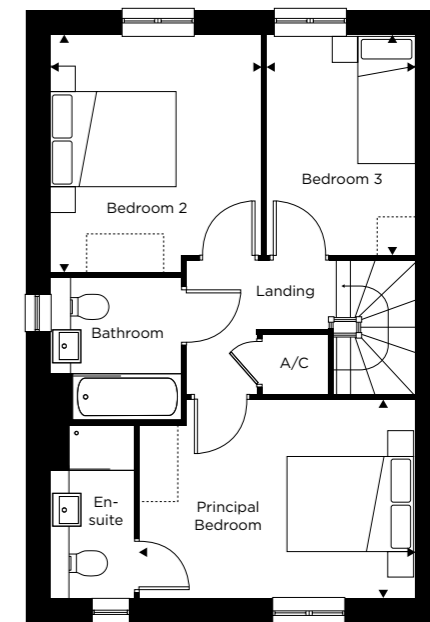
THE NENE

THREE BEDROOM HOUSE

SEMI-DETACHED: PLOTS 64* & 82



GROUND FLOOR



FIRST FLOOR

Ground Floor

Living/Dining
5.60m x 5.70m 18'4" x 18'8"

Kitchen
2.60m x 2.95m 8'6" x 9'8"

First Floor

Principal Bedroom
4.20m x 3.00m 13'9" x 9'10"

Bedroom 2
3.65m x 3.25m 11'11" x 10'7"

Bedroom 3
3.35m x 2.30m 10'11" x 7'6"

*Handed to floorplan shown

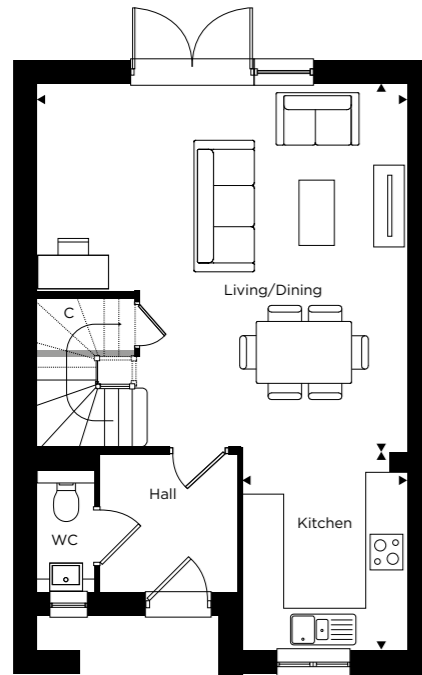
C = Cupboard A/C = Airing Cupboard = Indicative wardrobe position

All floorplans are not to scale. Layouts provide approximate measurements only and are subject to planning. Dimensions, which are taken from the indicated points of measurement, are for guidance only and are not intended to be used for window treatments or items of furniture. Bathroom and kitchen layouts are indicative only and are subject to change. The information contained within this document does not constitute part of any offer, contract or warranty. Whilst the plans have been prepared with all due care for the convenience of the intending purchaser, the information contained herein is a preliminary guide only.

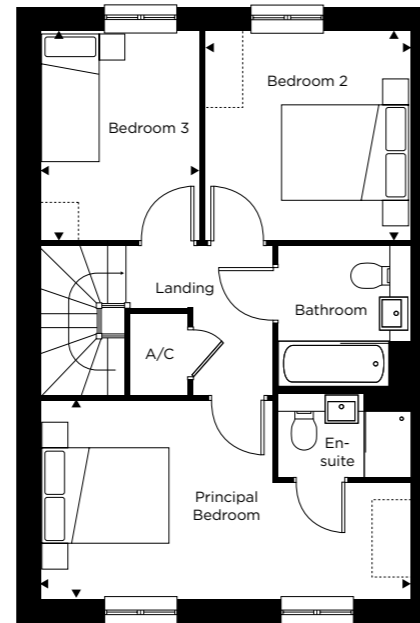
THE SPRING

THREE BEDROOM HOUSE

TERRACED: PLOTS 116, 117, 118, 141*, 142* & 143*



GROUND FLOOR



FIRST FLOOR

Ground Floor

Kitchen
2.50m x 3.10m 8'2" x 10'2"

Living/Dining Room
5.50m x 5.50m 18'0" x 18'0"

First Floor

Principal Bedroom
5.60m x 3.05m 18'4" x 10'0"

Bedroom 2
2.40m x 3.10m 7'10" x 10'2"

Bedroom 3
3.00m x 3.50m 9'10" x 11'5"

*Handed to floorplan shown

C = Cupboard A/C = Airing Cupboard = Indicative wardrobe position

All floorplans are not to scale. Layouts provide approximate measurements only and are subject to planning. Dimensions, which are taken from the indicated points of measurement, are for guidance only and are not intended to be used for window treatments or items of furniture. Bathroom and kitchen layouts are indicative only and are subject to change. The information contained within this document does not constitute part of any offer, contract or warranty. Whilst the plans have been prepared with all due care for the convenience of the intending purchaser, the information contained herein is a preliminary guide only.



Exterior finishes may vary, speak to the sales team for more information. Computer generated image of plots 141 - 143 The Spring is indicative only.

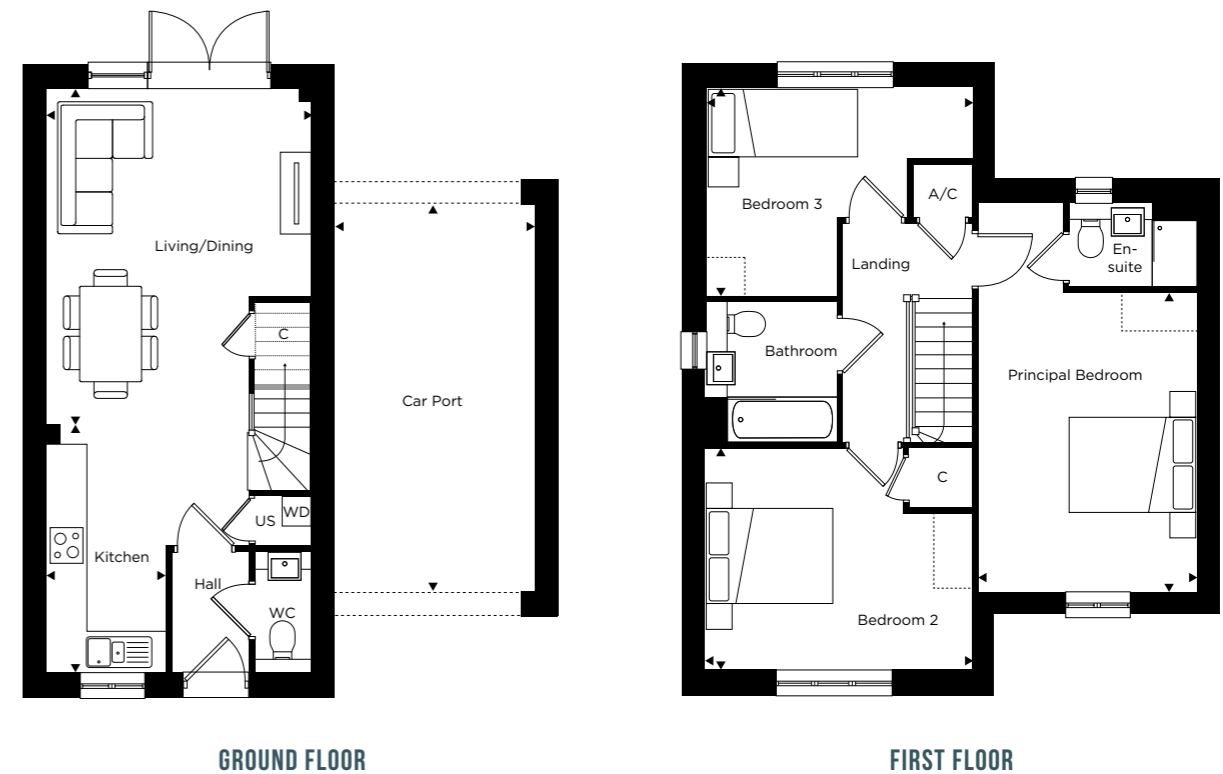


Exterior finishes may vary, speak to the sales team for more information. Computer generated image of plot 136 The Wensum is indicative only.

THE WENSUM

THREE BEDROOM HOUSE

LINK-DETACHED: PLOTS 89*, 123, 136, 137*, 146 & 147*



Ground Floor

Living/Dining
4.05m x 5.50m 13'3" x 18'0"

Kitchen
1.75m x 3.50m 5'8" x 11'5"

Car Port
3.15m x 6.00m 10'4" x 19'8"

First Floor

Principal Bedroom
3.35m x 5.95m 10'11" x 19'6"

Bedroom 2
4.05m x 3.20m 13'3" x 10'5"

Bedroom 3
4.05m x 3.40m 13'3" x 11'1"

*Handed to floorplan shown

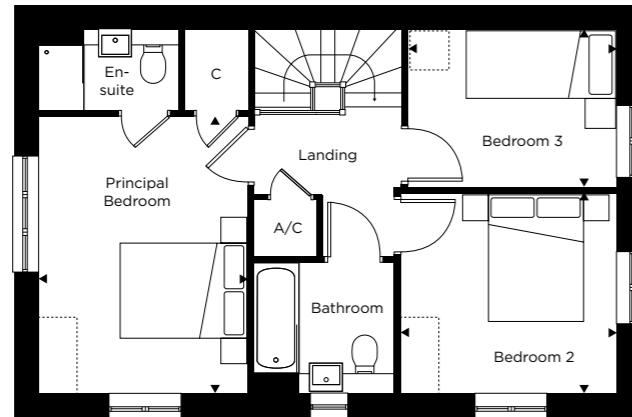
C = Cupboard A/C = Airing Cupboard US = Utility Store WD = Washer/Dryer [] = Indicative wardrobe position

All floorplans are not to scale. Layouts provide approximate measurements only and are subject to planning. Dimensions, which are taken from the indicated points of measurement, are for guidance only and are not intended to be used for window treatments or items of furniture. Bathroom and kitchen layouts are indicative only and are subject to change. The information contained within this document does not constitute part of any offer, contract or warranty. Whilst the plans have been prepared with all due care for the convenience of the intending purchaser, the information contained herein is a preliminary guide only.

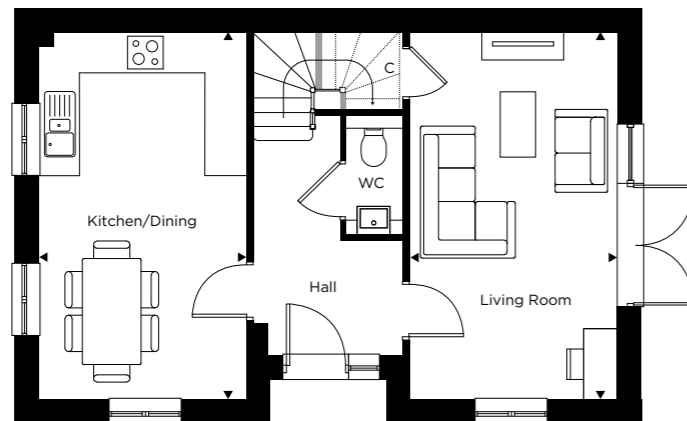
THE INGOL

THREE BEDROOM HOUSE

SEMI-DETACHED: PLOTS 65* & 83



FIRST FLOOR



GROUND FLOOR

Ground Floor

Kitchen/Dining
3.15m x 5.60m 10'4" x 18'4"

Living Room
3.15m x 5.60m 10'4" x 18'4"

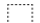
First Floor

Principal Bedroom
3.20m x 4.20m 10'5" x 13'9"

Bedroom 2
3.30m x 3.05m 10'9" x 10'0"

Bedroom 3
3.20m x 2.45m 10'5" x 8'0"

*Handed to floorplan shown

C = Cupboard A/C = Airing Cupboard  = Indicative wardrobe position

All floorplans are not to scale. Layouts provide approximate measurements only and are subject to planning. Dimensions, which are taken from the indicated points of measurement, are for guidance only and are not intended to be used for window treatments or items of furniture. Bathroom and kitchen layouts are indicative only and are subject to change. The information contained within this document does not constitute part of any offer, contract or warranty. Whilst the plans have been prepared with all due care for the convenience of the intending purchaser, the information contained herein is a preliminary guide only.



Exterior finishes may vary, speak to the sales team for more information. Computer generated image of plot 83 The Ingol is indicative only.

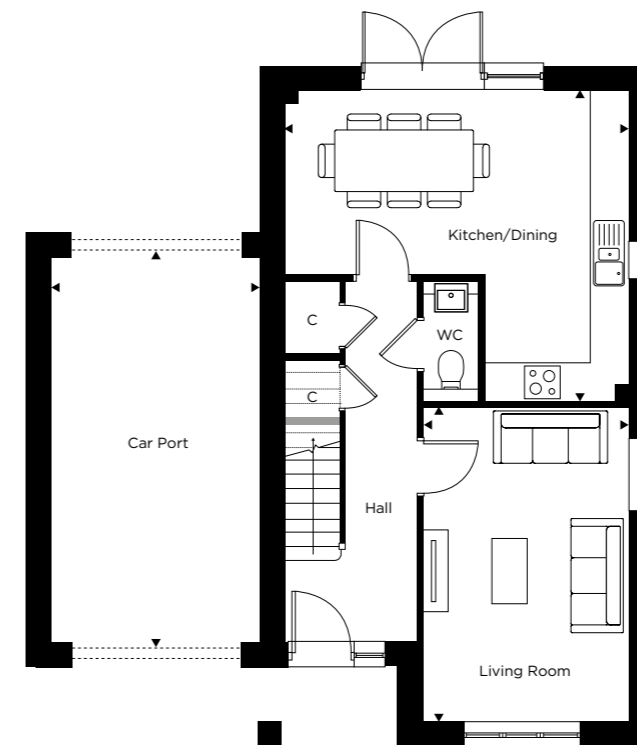


Exterior finishes may vary, speak to the sales team for more information. Computer generated image of plot 115 The Yare is indicative only.

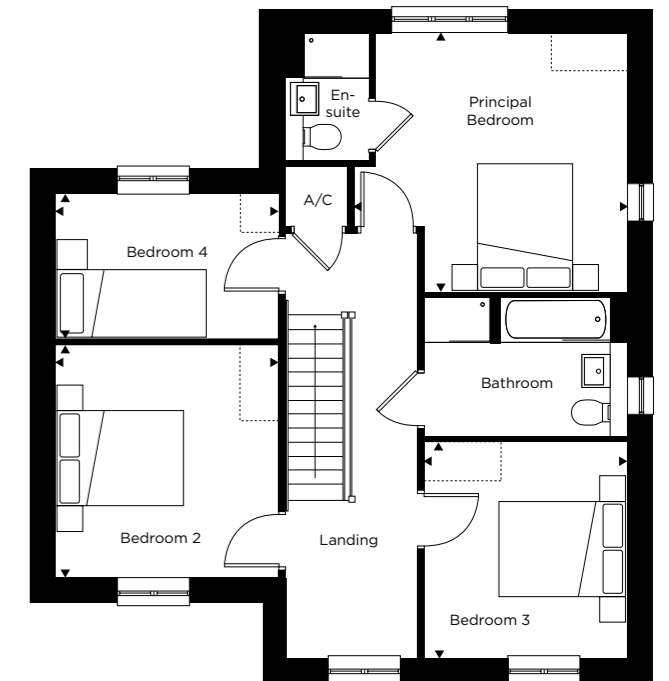
THE YARE

FOUR BEDROOM HOUSE

LINK-DETACHED: PLOTS 88*, 112*, 113, 115, 122 & 133*



GROUND FLOOR



FIRST FLOOR

Ground Floor

Kitchen/Dining	5.30m x 4.75m	17'4" x 15'7"
Living Room	3.15m x 4.80m	10'4" x 15'8"
Car Port	3.15m x 6.00m	10'4" x 19'8"

First Floor

Principal Bedroom	4.25m x 4.00m	13'11" x 13'1"
Bedroom 2	3.45m x 3.60m	11'3" x 11'9"
Bedroom 3	3.15m x 3.30m	10'4" x 10'9"
Bedroom 4	3.45m x 2.25m	11'3" x 7'4"

*Handed to floorplan shown

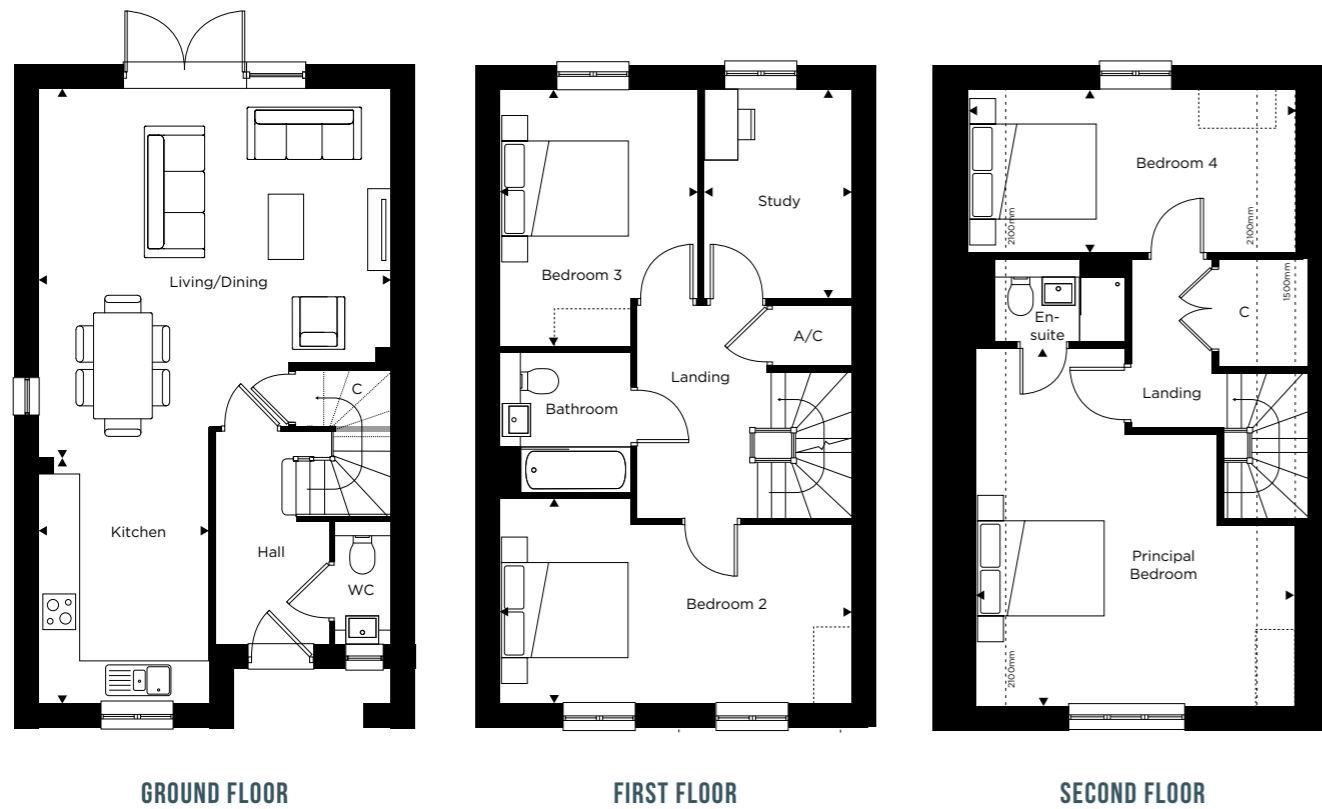
C = Cupboard A/C = Airing Cupboard = Indicative wardrobe position

All floorplans are not to scale. Layouts provide approximate measurements only and are subject to planning. Dimensions, which are taken from the indicated points of measurement, are for guidance only and are not intended to be used for window treatments or items of furniture. Bathroom and kitchen layouts are indicative only and are subject to change. The information contained within this document does not constitute part of any offer, contract or warranty. Whilst the plans have been prepared with all due care for the convenience of the intending purchaser, the information contained herein is a preliminary guide only.

THE TIFFEY

FOUR BEDROOM HOUSE

DETACHED: PLOTS 121* & 135



Ground Floor

Living/Dining
5.40m x 5.70m 17'8" x 18'8"

Kitchen
2.60m x 3.75m 8'6" x 12'3"

First Floor

Bedroom 2
5.40m x 2.85m 17'8" x 9'4"

Bedroom 3
3.05m x 4.25m 10'0" x 13'11"

Study
2.25m x 3.20m 7'4" x 10'5"

Second Floor

Principal Bedroom
4.85m x 5.50m 15'10" x 18'0"

Bedroom 4
5.10m x 2.50m 16'8" x 8'2"

*Handed to floorplan shown

C = Cupboard A/C = Airing Cupboard = Indicative wardrobe position = Restricted head height (mm)

All floorplans are not to scale. Layouts provide approximate measurements only and are subject to planning. Dimensions, which are taken from the indicated points of measurement, are for guidance only and are not intended to be used for window treatments or items of furniture. Bathroom and kitchen layouts are indicative only and are subject to change. The information contained within this document does not constitute part of any offer, contract or warranty. Whilst the plans have been prepared with all due care for the convenience of the intending purchaser, the information contained herein is a preliminary guide only.



Exterior finishes may vary, speak to the sales team for more information. Computer generated image of plot 135 The Tiffey is indicative only.

WORKING TOGETHER TO CREATE OUTSTANDING HOMES

THE GABLES IS A COMMUNITY-FOCUSED COLLABORATION BETWEEN
HILL AND LATIMER BY CLARION HOUSING GROUP.



50

Street scene image of plots 128 - 122 on Linnet Drive is indicative only.



Hill is an award-winning housebuilder and one of the leading developers in London, the home counties, and the South.

The company is renowned for its partnership ethos, specialising in the building of distinctive new places and communities where people want to live, work, and socialise. It is now in the process of opening new regional offices to facilitate growth in the Midlands.

In its 24th year, this family-owned and operated company has grown to establish itself as the UK's second-largest privately-owned housebuilder, with an impressive and diverse portfolio of projects ranging from landmark, mixed-use regenerations, and inner-city apartment developments to homes in rural communities.

Employing over 800 staff, the company operates from six strategically located regional offices, with its head office based in Waltham Abbey, Essex.

Hill anticipates completing over 3,000 homes by the close of its current financial year and has a controlled land bank with planning consent for over 8,500 units. Around half of its portfolio is in joint ventures to deliver a range of mixed-tenure developments, reflecting Hill's commitment to partnerships with government, local authorities, housing associations, and private clients.

Since the company was founded in 1999, Hill has won over 500 industry awards, including the esteemed titles of WhatHouse? Housebuilder of the Year in 2015, 2020, and most recently in 2023, when it also won the Best Large Housebuilder accolade in its first year entering the category. Rubicon, Hill's innovative and beautifully designed development at Knights Park in Eddington, Cambridge, has been recognised with four prestigious WhatHouse? Awards in 2023, including gold awards for Best Development and Best Exterior Design. Rubicon also won Best Design for Four Storeys or More at the 2023 Housebuilder Awards. The Beech, a stunning contemporary home at Marleigh, won the Best Family Home award at the Evening Standard New Homes Awards 2023 and silver in the Best House category at the WhatHouse? Awards in the same year.

In addition, Hill's dedication to delivering the highest quality homes and exceptional customer service has earned the housebuilder its 5-star status in the Home Builders Federation's annual Customer Satisfaction Survey for the past six years.

The Hill Group is donating 200 fully equipped modular homes to local authorities and homeless charities as part of a £15 million pledge through its Foundation 200 programme, launched in 2019 to mark Hill's 20th anniversary.



Follow us on Facebook and Instagram @CreatedbyHill



Latimer is part of Clarion Housing Group, whose history can be traced back to the early 1900s. Today Clarion is a social landlord and the country's largest housing association. It owns 125,000 properties, homes for more than 350,000 people. Latimer is Clarion's development arm. It was created to ensure that Clarion has an organisation capable of building homes of all tenures, for multiple communities and locations, realising our mission to play a part in tackling Britain's housing crisis.

With nearly 300 employees, Latimer is a growing and ambitious development company, specialising in the development, project management and delivery of complex projects. We are committed to investing billions of pounds in new housing over the next decade, building at scale and creating vibrant new places to live. Profits made by Latimer go back into Clarion, giving the Group even more opportunities to build homes and create communities.

Along with these ambitions, we remain mindful of the ideals of Clarion. Social purpose is at the heart of Clarion, as is a passion for maximising the opportunities available to everyone who lives in a Clarion home and community. This is supported by Clarion Futures, the charitable foundation of Clarion Housing Group, with a mission to provide people with the tools and support they need to transform their lives and communities for the better.

Where possible we will always strive to offer over the minimum requirement for affordable homes on our developments. Shared ownership, also known as part buy, part rent and is designed to be a stepping stone to you owning your home outright. You buy a share of your home - as much as you can afford - starting from as little as 10% and rising up to 75% of the property's value. You then pay subsidised rent to us on the remaining share of your home.

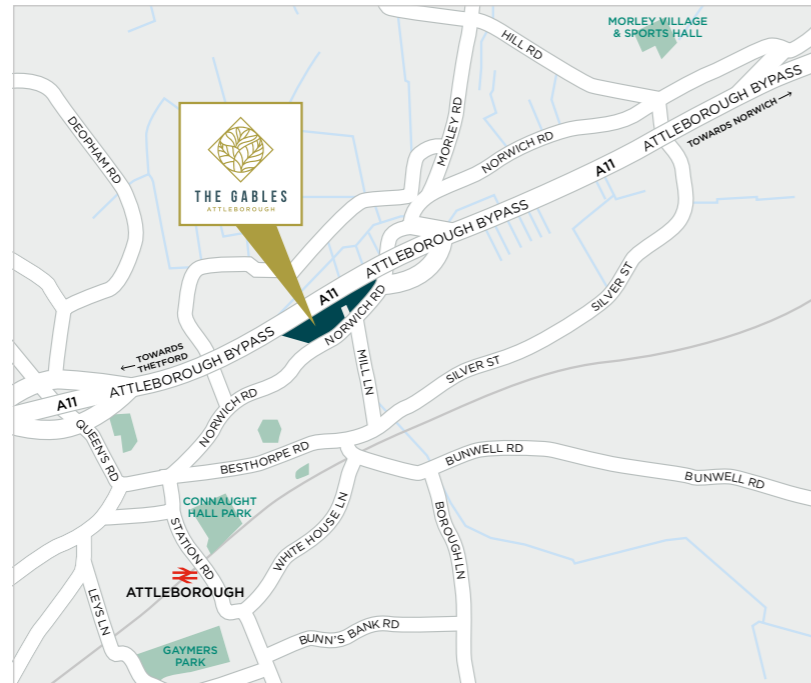


Follow us on Facebook and Instagram @latimer

Hill - an award-winning housebuilder



HOW TO FIND US

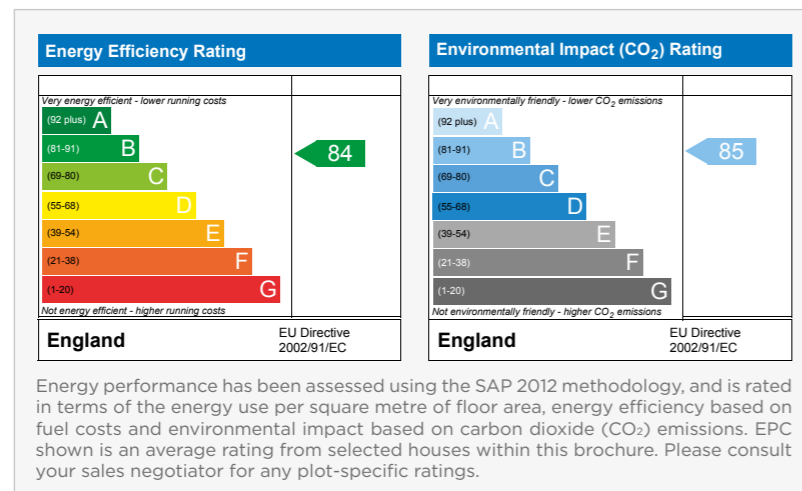


THE GABLES
ATTLEBOROUGH

Norwich Road, Attleborough NR17 2JX

01603 882420
thegables-attleborough.co.uk

PREDICTED ENERGY ASSESSMENT CHARTS





LATIMER
by Clarion Housing Group



Hill
Created for Living